

Specifications

ApeosPort 550i / 450i / 350i

Output Speed - Printing & Copying

	550i	450i	350i
A4 Monochrome	55 ipm	45 ipm	35 ipm
A3 Monochrome	28 ipm	24 ipm	19 ipm

Network Printing

Processor	Power PC 350MHz
Memory (Standard)	512MB
Hard Disk	40GB
Interface	Standard: 100Base-TX/10Base-T, Parallel Port (IEEE1284) Optional: USB 2.0
Printer Languages	PCL6, PCL5e, Adobe PostScript 3
Resolution	1,200 x 1,200 dpi
Operating Systems	Windows® 95/98/Me, Windows NT® 4.0, Windows® 2000/XP, Windows Server 2003
Protocols	TCP/IP, IPX, SPX, EtherTalk, SMB, IPP, NetBEUI, RFC1876, Port9100

Copying

FCOT	3.2 seconds or less
Concurrency	Yes
Resolution	True 600 x 600 dpi
Reduction / Enlargement	25 to 400%
Maximum Set Quantity	999
Internal Copy Auditron	Standard
Foreign Device Interface (optional)	Interface to 3rd party access control devices

Network Scanning

Concurrency	Yes
Input Speed	ApeosPort 550i: 55ipm ApeosPort 450i / 350i: 52ipm
Resolution	600 / 400 / 300 / 200 dpi
Maximum Scan Area	A3
Network Protocol (Network Scanning)	TCP / IP (Salutation, HTTP, SMB, FTP, SMTP)
File Formats	TIFF & PDF
Document Management Fields	6
Scan Destinations	E-mail, Mailbox, Server/PC (using FTP / SMB Protocol)

Facsimile

Transmission Time	Less than 3 seconds per page (G3:28.8 kbps, JBIG)
Multiple Lines (optional)	Up to 2 additional lines (maximum 3 lines)
Speed Dials / Group Dials	500 / 20
Sending Document Size	A4 & A3

Paper Handling - DADF

Capacity	75 Sheets
Paper Sizes	A5 to A3
Paper Weights	38 to 128gsm

Paper Handling - Tray 1

Capacity	500 Sheets
Paper Sizes	A5 to A3
Paper Weights	60 to 105 gsm

Paper Handling - Tray 2

Capacity	500 Sheets
Paper Sizes	A5 to A3
Paper Weights	60 to 216 gsm

Paper Handling - Trays 3 & 4 (Two Tray Module)

Capacity	500 Sheets each
Paper Sizes	A5 to A3
Paper Weights	60 to 216 gsm

Paper Handling - Trays 3 & 4 (Tandem Tray Module)

Capacity	Tray 3: 800 Sheets Tray 4: 1,200 Sheets
----------	--

Paper Sizes	A4
Paper Weights	60 to 216 gsm

Paper Handling - Bypass Tray

Capacity	95 Sheets
Paper Sizes	A5 to A3
Paper Weights	60 to 216 gsm

High Capacity Feeder (Optional)

Capacity	2,000 Sheets
Paper Sizes	B5 to A4
Paper Weights	56 to 216 gsm

B-Finisher - Stacker / Stapler (Optional on ApeosPort 450i/350i only)

Stapler Paper Sizes	B5 to A3
Stacker Capacity	Non-Stapled: 1,000 sheets (64 to 105 gsm) Stapled: 50 sets (64 to 90 gsm)

Stapler Capacity	50 sheets
Staple Positions	Front Corner (single), rear straight (single) dual
Staple Cartridge	5,000 staples

C-Finisher - Stacker / Stapler / Puncher (Optional)

Stacker Capacity	Non-Stapled: 3,000 sheets Stapled: 200 sets
Stacker Paper Weights	60 to 216 gsm
Stapler Capacity	50 sheets
Stapler Paper Sizes	B5 to A3
Stapler Paper Weights	60 to 90 gsm
Staple Positions	Front Corner (single), Rear corner (single), Rear straight (single), Dual

Stacker Capacity	Non-Stapled: 1,500 sheets Stapled: 200 sets
Stacker Paper Weights	60 to 216 gsm
Stapler Capacity	50 sheets
Stapler Paper Sizes	B5 to A3
Stapler Paper Weights	60 to 90 gsm
Staple Positions	Front Corner (single), Rear corner (single), Rear straight (single), Dual

Stacker Capacity	Non-Stapled: 1,500 sheets Stapled: 200 sets
Stacker Paper Weights	60 to 216 gsm
Stapler Capacity	50 sheets
Stapler Paper Sizes	B5 to A3
Stapler Paper Weights	60 to 90 gsm
Staple Positions	Front Corner (single), Rear corner (single), Rear straight (single), Dual

Stacker Capacity	Non-Stapled: 1,500 sheets Stapled: 200 sets
Stacker Paper Weights	60 to 216 gsm
Stapler Capacity	50 sheets
Stapler Paper Sizes	B5 to A3
Stapler Paper Weights	60 to 90 gsm
Staple Positions	Front Corner (single), Rear corner (single), Rear straight (single), Dual

Stacker Capacity	Non-Stapled: 1,500 sheets Stapled: 200 sets
Stacker Paper Weights	60 to 216 gsm
Stapler Capacity	50 sheets
Stapler Paper Sizes	B5 to A3
Stapler Paper Weights	60 to 90 gsm
Staple Positions	Front Corner (single), Rear corner (single), Rear straight (single), Dual

Stacker Capacity	Non-Stapled: 1,500 sheets Stapled: 200 sets
Stacker Paper Weights	60 to 216 gsm
Stapler Capacity	50 sheets
Stapler Paper Sizes	B5 to A3
Stapler Paper Weights	60 to 90 gsm
Staple Positions	Front Corner (single), Rear corner (single), Rear straight (single), Dual

Stacker Capacity	Non-Stapled: 1,500 sheets Stapled: 200 sets
Stacker Paper Weights	60 to 216 gsm
Stapler Capacity	50 sheets
Stapler Paper Sizes	B5 to A3
Stapler Paper Weights	60 to 90 gsm
Staple Positions	Front Corner (single), Rear corner (single), Rear straight (single), Dual

Stacker Capacity	Non-Stapled: 1,500 sheets Stapled: 200 sets
Stacker Paper Weights	60 to 216 gsm
Stapler Capacity	50 sheets
Stapler Paper Sizes	B5 to A3
Stapler Paper Weights	60 to 90 gsm
Staple Positions	Front Corner (single), Rear corner (single), Rear straight (single), Dual

Stacker Capacity	Non-Stapled: 1,500 sheets Stapled: 200 sets
Stacker Paper Weights	60 to 216 gsm
Stapler Capacity	50 sheets
Stapler Paper Sizes	B5 to A3
Stapler Paper Weights	60 to 90 gsm
Staple Positions	Front Corner (single), Rear corner (single), Rear straight (single), Dual

Stacker Capacity	Non-Stapled: 1,500 sheets Stapled: 200 sets
Stacker Paper Weights	60 to 216 gsm
Stapler Capacity	50 sheets
Stapler Paper Sizes	B5 to A3
Stapler Paper Weights	60 to 90 gsm
Staple Positions	Front Corner (single), Rear corner (single), Rear straight (single), Dual

Stacker Capacity	Non-Stapled: 1,500 sheets Stapled: 200 sets
Stacker Paper Weights	60 to 216 gsm
Stapler Capacity	50 sheets
Stapler Paper Sizes	B5 to A3
Stapler Paper Weights	60 to 90 gsm
Staple Positions	Front Corner (single), Rear corner (single), Rear straight (single), Dual

Stacker Capacity	Non-Stapled: 1,500 sheets Stapled: 200 sets
Stacker Paper Weights	60 to 216 gsm
Stapler Capacity	50 sheets
Stapler Paper Sizes	B5 to A3
Stapler Paper Weights	60 to 90 gsm
Staple Positions	Front Corner (single), Rear corner (single), Rear straight (single), Dual

Stacker Capacity	Non-Stapled: 1,500 sheets Stapled: 200 sets
Stacker Paper Weights	60 to 216 gsm
Stapler Capacity	50 sheets
Stapler Paper Sizes	B5 to A3
Stapler Paper Weights	60 to 90 gsm
Staple Positions	Front Corner (single), Rear corner (single), Rear straight (single), Dual

Stacker Capacity	Non-Stapled: 1,500 sheets Stapled: 200 sets
Stacker Paper Weights	60 to 216 gsm
Stapler Capacity	50 sheets
Stapler Paper Sizes	B5 to A3
Stapler Paper Weights	60 to 90 gsm
Staple Positions	Front Corner (single), Rear corner (single), Rear straight (single), Dual

Stacker Capacity	Non-Stapled: 1,500 sheets Stapled: 200 sets
Stacker Paper Weights	60 to 216 gsm
Stapler Capacity	50 sheets
Stapler Paper Sizes	B5 to A3
Stapler Paper Weights	60 to 90 gsm
Staple Positions	Front Corner (single), Rear corner (single), Rear straight (single), Dual

Compact office Multifunction with Advanced Network Functionality.



Protecting the environment is a fundamental component of our company's commitment to corporate citizenship.

At Fuji Xerox Australia, we supply products that have been designed with both our customers and the environment in mind. As a world leader in the development of parts and components Remanufacturing Programs, we have made Eco Manufacturing an integral part of our business.

All our sites have achieved ISO 14001 Environmental Management System Certification, as a demonstration of our commitment to protecting the environment.



13 14 12

www.fujixerox.com.au

Fuji Xerox Australia Pty Ltd. ABN 63 000 341 819. Australian Head Office: 101 Waterloo Rd, North Ryde NSW 2113. Phone (02) 9856 5000 Fax (02) 9856 5003

©2005 Fuji Xerox, Xerox, The Document Company, the stylised X, Document Centre, DocuCentre, Apeos, the Apeos logo and ApeosPort are registered trademarks/trademarks of Fuji Xerox or its associated companies. Other trademarks are the property of their respective owners. Whilst the information is correct at the time of printing, Fuji Xerox Australia Pty Ltd reserves the right to change the specifications or withdraw supply of the equipment/software described herein without notice. Quality Endorsed Company ISO 9001:2000. QEC1950/01 SAI Global, Certified Environmental Management ISO 14001:1996. C10094 SAI Global. Printed in Australia, October 2005.

¹ Apeos ix is expected to be available in Australia early 2006. Some customisation may be required to allow integration with your organisations infrastructure. Fuji Xerox Australia can provide customisation services at an additional fee. For additional information, please contact Fuji Xerox Australia on 13 14 12.

² WHQL Certification is expected to be obtained by December 2005

* Standard with both C-Finishers

For detailed product specifications, optimum performance parameters & service clearances refer to the ApeosPort 550i/450i/350i Customer Expectation Document.

ApeosPort, The Gateway to An Integrated Open Office

ApeosPort 550i/450i/350i is the latest multifunction offering from Fuji Xerox Australia. Equipped with printing, copying, scanning and faxing capabilities as standard, ApeosPort produces quality output (1,200 x 1,200 dpi) at fantastic speeds of up to 55/45/35 ipm.

Building on the Fuji Xerox Five Intelligent Services and the ability to integrate with virtually any organisation's infrastructure, ApeosPort also improves workflow, increases productivity and protects intellectual property, saving time and money.

Additionally, the new Apeos iiX (Apeos Internet Integration based on XML and SOAP) extends ApeosPort's capabilities beyond those of a regular multifunction device. Apeos iiX allows users to connect to various business critical applications and provides a suite of software development kits for customisation and integration¹... making it a truly intelligent portal.

ApeosPort 550i / 450i / 350i

When operating in a busy work environment, you need a flexible multifunction device with superior functionality to operate productively and simplify the document production process. As such, a number of optional value added accessories are available with this device to help you achieve just that.

Paper Tray Configurations

ApeosPort 550i/450i/350i is configured to include any of the following tray options:

- Two trays (A5 to A3) with a stand
- Two Trays (A5 to A3) plus Two Tandem Trays (A4 only)
- Two Trays (A5 to A3) plus a Two Tray Module (A5 to A3)

High Capacity Feeder

This optional 2,000 sheet external paper tray increases the supply of the most commonly used paper size (A4) to enable longer uninterrupted job runs.

B-Finisher – Stacker/Stapler

This finishing option is capable of stacking collated, uncollated and/or stapled output (available with ApeosPort 450i/350i only).

C-Finisher – Stacker/Stapler/Puncher

This finisher allows users the convenience of stapling and/or hole-punching up to 50-sheets at a time in order to create professional looking documents, affordably.

C-Finisher – Stacker/Stapler/Puncher/Booklet Maker

In addition to the above-mentioned C-Finisher features, this finisher is capable of creating Saddle Stitched booklets and Bi-Folding.

ApeosPort 550i / 450i / 350i Configuration Options:

2,000 Sheet
High Capacity
Feeder



Tandem Tray Module



Two Tray Module

Scanning

Scanning at speeds of up to 55 ipm at 600 x 600 dpi resolution, ApeosPort enables the effective digitisation of hardcopy documents in a manner that retains their original characteristics as closely as possible. Once scanned, documents can be distributed in various formats (PDF, TIFF, JPEG) to multiple locations including:

- Mailbox
- Server / PC using SMB Protocol
- Email
- Server / PC using FTP Protocol

Light Directory Access Protocol (LDAP)

Whilst email addresses can be manually stored and retrieved on the device, LDAP enhances this process by linking to your organisation's mail server and allowing users to search for email addresses by recipient name.

WebDav

When used in conjunction with CentreWare EasyOperator, users can view the contents of a mailbox as thumbnails or at full screen as required.



Faxing

The office Facsimile is an important communication device in any business environment. ApeosPort transmits faxes at speeds of less than three seconds per page and can be configured to include two additional fax lines for sending and receiving faxes.

PC Faxing

To save paper and reduce costs users can send faxes directly from their PC using the printer driver.

Internet Fax (iFax)

The standard iFax feature on ApeosPort takes faxing to the next level.

Rather than using traditional phone lines to send faxes (a costly process when sending interstate or international faxes), this cost saving feature uses the internet. This reduces costs considerably with each fax costing the same as a local phone call regardless of destination.

Fax to Email

Using Job Flow Sheets linked to mailboxes on the device ApeosPort 550i/450i/350i is also capable of automatically routing incoming faxes (and/or scanned documents) to various destinations including email, print and/or anywhere on the network using SMB/FTP protocol.

Dedicated Trays

Using the standard side output tray, ApeosPort can be configured to receive hard copy fax, print and/or copy output to a dedicated tray.

Additional Features

A few more of the fax features available include:

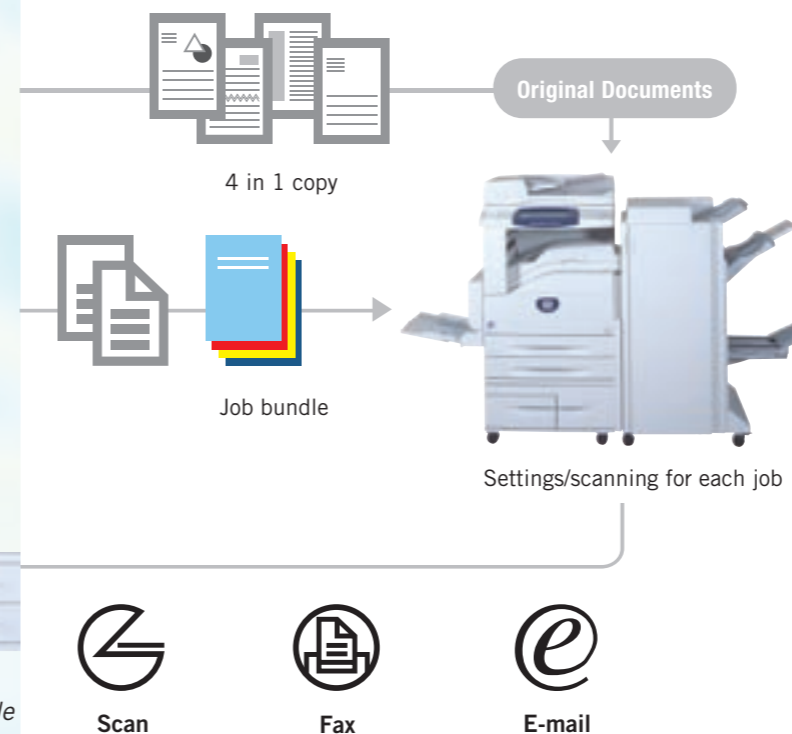
- Delayed send
- Mailbox sending/receiving
- A3 document faxing

Kind to our Customers...

When you purchase a Fuji Xerox product you are purchasing reliability, not just efficiency. Training is provided on how to use the various features effectively, while our Online Support Assistant, together with our highly trained team of technicians, are on hand and included in your support services agreement.

... As well as our Planet ...

Additionally, Fuji Xerox products conserve natural resources through designs that minimise wastage during manufacturing and use, maximise energy efficiency in your office, and work reliably with Fuji Xerox recycled paper.



Multifunction

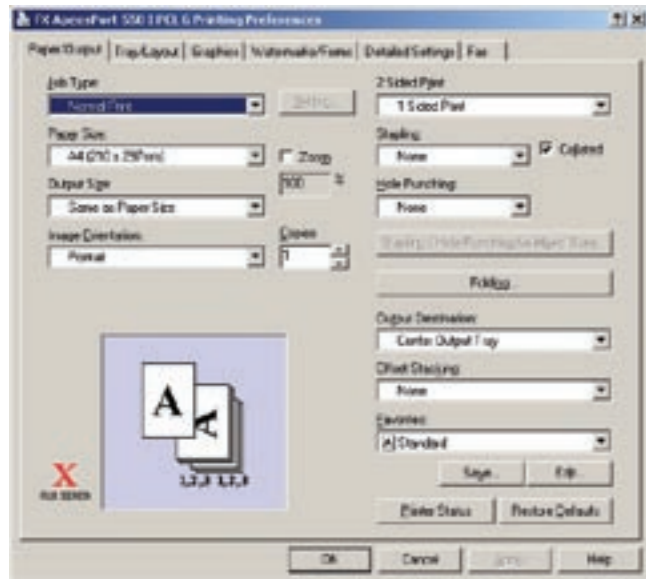
Capabilities to Surpass Expectations

Printing

At its core, ApeosPort 550i / 450i / 350i is a fast, dependable monochrome printer capable of producing documents at speeds of 55/45/35 ipm. Printed output is crisp and sharp with resolutions of up to 1,200 x 1,200 dpi and the device also supports a wide variety of media types of up to 216gsm.

Printer Drivers

The intuitive WHQL certified² PCL6 and PostScript printer drivers are standard features on this device and enable seamless integration with various industry standard operating systems.



Mailbox Print / Document Merge

Documents printed frequently by one or more users need to be available for quick and easy retrieval on demand. The Mailbox Print feature enables this as it allows documents to be saved to a mailbox indefinitely for future retrieval and/or merged with other printed and/or scanned documents within the mailbox to create one batch file for printing.

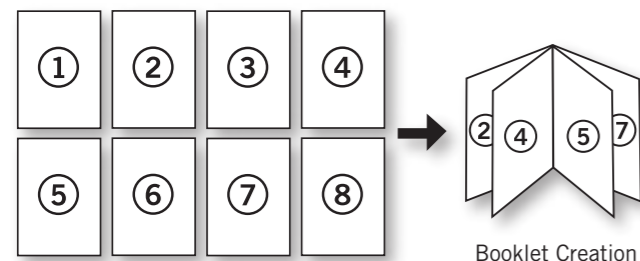
Favourite Print Settings

The settings of frequently printed documents can be saved as favourites in users' printer drivers. These include paper sizes, cover insertion(s), duplex and finishing requirements and save users the time required to manually select these for each individual print job.

Additional Features

A few more of the convenient print features of this device include:

- N-Up Printing
- Booklet Creation
- Banner Printing
- Delayed Print



Copying

A powerful office copier with a First Copy Out Time (FCOT) of 3.2 seconds or less, standard duplexing and jam packed with features to simplify document production, the ApeosPort 550i / 450i / 350i is equipped to fulfil just about all your office copier needs.

Job Build

Merging and manipulating hardcopy documents is easy using the Job Build feature. It allows users to divide a copy job into numerous segments, apply unique settings to each, collate and print all segments; thus eliminating the need for manual copying and collation, see diagram below.

Lightweight Media Copying

With the new light-weight printing feature, documents such as tracing paper as thin as 38gsm can be copied and images reproduced clearly.

Poster Creation

Poster sized copies of an image can be achieved by copying sections of the image onto multiple sheets which are assembled as a large poster.

Media Identification and Auto Tray Switching

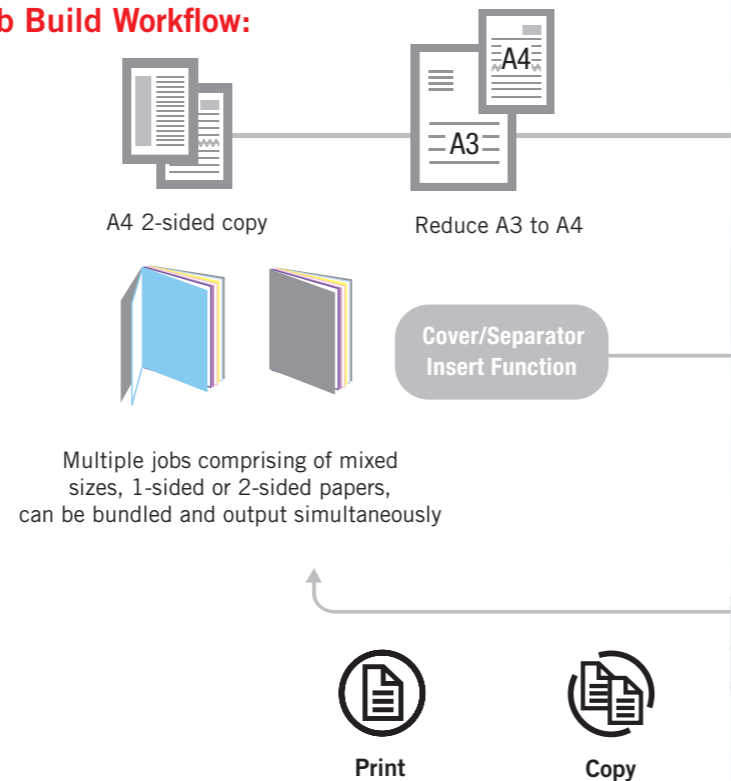
The intuitive DADF reduces manual handling by automatically identifying (and reproducing size for size) original documents being copied. ApeosPort also maintains productivity by automatically switching paper trays when the current tray is emptied.

Additional Features

A few more of the copy features available include:

- Covers Insertion
- Repeat Image
- Annotation Insertion
- Double-sided book copying

Job Build Workflow:

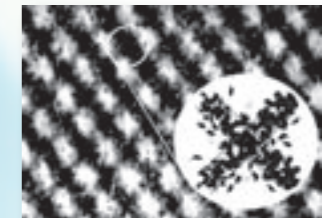


ApeosPort 550i with optional High Capacity Feeder and C-Finisher - Stacker / Stapler / Puncher / Booklet Maker

Emulsion Aggregation (EA) Toner

The Emulsion Aggregation toner in Fuji Xerox devices uses a patented process to produce finer toner particles, uniform in size and shape. During printing, this toner transfers onto paper more quickly and produces sharper images than conventional toners. Consequently, transfer is more consistent, text is clearer, coverage is more even and image quality is higher.

As an added benefit, EA Toner is environmentally friendly. The manufacturing process cuts CO2 emissions by up to 35%, toner consumption is reduced by up to 35% and toner wastage is cut by up to 65%.



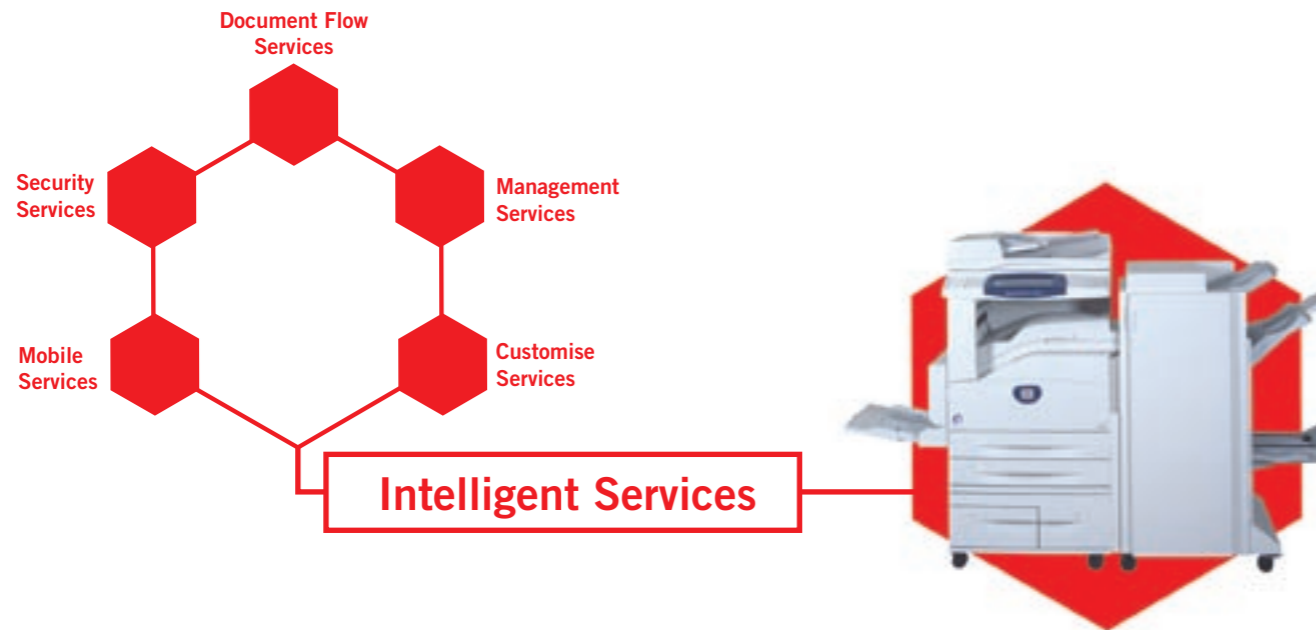
Conventional toner suffers from screen dispersion because of particle size and uneven shape.



EA Toner uniformity (shape and diameter) reproduces screens precisely, without unwanted toner dispersion.



Five intelligent services... one open office enabler



More than just an advanced multifunction device, ApeosPort 550i/450i/350i is a solution with Five Intelligent Services to manage security, control costs, facilitate intra-office collaboration and enable you to work hands-on anywhere, anytime, efficiently.

Security Services

In an age where document security is paramount, ApeosPort leads the way. It is specially equipped with multi-tiered security capabilities that enhance peace of mind without subtracting any of the benefits of a networked environment. These include:

Secure Socket Layer (SSL) / Secure/Multi-Purpose Internet Mail Extensions (S/MIME)

These allow for the encryption and secure transfer of emails sent to and from the device as well as secure communications across the internet for users accessing the device remotely.

Data Security Kit (Encryption / Overwrite / Zero Clear)

This optional feature provides three alternatives for managing the security of data held on the Hard Disk Drive:

- **Overwriting** the image partition of the HDD automatically or manually as required with a single or multiple overwrite.
- **Encryption** of HDD Data with a 12-digit code.
- **Zero Clear** deletion of all partitions including settings, usually undertaken during device relocation or removal.

Security Watermark

Specified security text strings or background images can be embedded repeatedly into a print or copy document as a concealed image. This image becomes visible on any copy, scan or fax of the protected document.

Secure Print

Confidential print jobs can be sent to and held at the device. To enable printing, the user must enter a pre-defined password at the device user-interface panel. Users can delete the job, or retain it on the hard disk drive for future reprinting.

Document Flow Services

Streamlining document flows within an organisation increases efficiency, encourages information sharing and enhances knowledge management.

Using advanced digital conversion software, ApeosPort 550i/450i/350i easily converts hardcopy documents into digital format for distribution. "Job Flow Sheets", linked to any one of the device's 500 mailboxes can be programmed to streamline scanned or received fax document distribution by dispersing them in any of the following ways:

- Printing
- Emailing
- Saving to a mailbox
- Sending to server using SMB/FTP protocol

This programming can be set at the device or remotely at a PC.

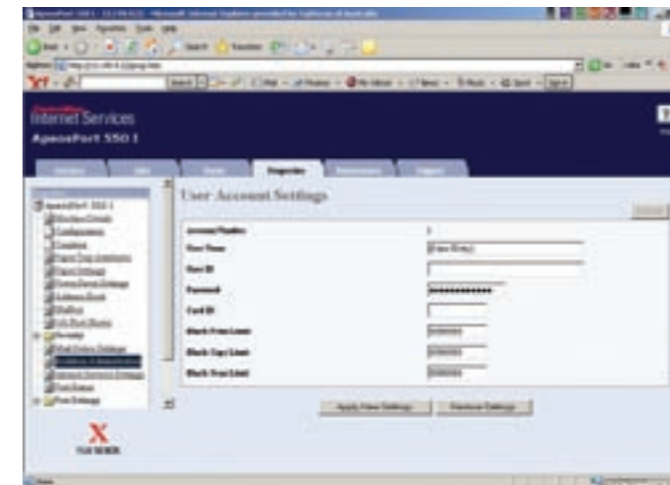


Management Services

Includes a suite of functions designed to simplify the setup and management of the device. These handy features allow you to control costs, restrict device access and monitor usage, putting an end to worries of costs running out of control.

Internal Auditor and Network Authentication

Control costs and manage security using the Internal Auditor and Network Authentication. These allow you to impose restrictions on users' access to all machine (i.e. print/copy/scan/fax) or network (scan to email/scan to SMB/FTP) functions.



Device Management Solutions

A host of solutions are currently available to help simplify device management:

- **CentreWare Web** manage various aspects (ie installation, configuration, reporting, troubleshooting etc) of all print devices on the organisation's network regardless of manufacturer.
- **CentreWare Internet Services** (Embedded Web Server) configure network settings, view status, manage job queues and administer devices remotely.
- **CentreWare EasyAdmin** (optional) simplify device set up and configuration, set up multiple machines and clone existing settings to other devices.

CentreWare EasyAdmin also generates comprehensive usage graphs to monitor device usage by function and/or user.

Device Enhancing Solutions

A range of powerful software solutions co-developed by Fuji Xerox Australia and our strategic partners can also be utilised to further enhance this device's capabilities. These include a cost recovery solution from Equitrac®, a document manipulation/repurposing solution (Scan to PC) and a document workflow solution with the capability of automating traditionally manual processes by using OCR/ICR/OMR technology, barcode recognition and EDRMS (EzeScan).

Customisation Services

This user-friendly solution can be customised according to workgroup requirements to increase productivity.

Customisable User Interface

The user interface can be set-up to feature only the most commonly used functions. These can be set to either hard or touch screen buttons according to preference, while other function keys can be relocated to simplify usage even further.

Mobile Services

The input / output of documents can now easily be achieved across multiple office locations and international borders – an ideal solution for executives with heavy travel commitments.

CentreWare Easy Operator

This multi-location device management feature allows intra-office users to quickly and easily access devices at their current location within a network covering multiple locations.



Feature sequence on touch screen panel can be re-arranged

Preferred functions can be assigned to the dedicated buttons